



COMPANY PROFILE · 2026

EST. 1997 · CLASS 'A' ELECTRICAL CONTRACTOR · RDSO-COMPLIANT

Simplex Electricals.

HDD & Electrical Contractors · Engineering Since 1997

OUR MANTRA

Good Engineering + Disciplined Project Management.

COMPANY PROFILE · 2026

WWW.SIMPLEXELECTRICALS.COM



— ABOUT SIMPLEX ELECTRICALS

Execution certainty for India's **critical** infrastructure.

Simplex Electricals is an execution-focused Horizontal Directional Drilling (HDD) and Industrial Class 'A' Electrical contracting firm. For 29 years we have absorbed execution complexity so our partners — Indian Railways, DISCOMs, EPCs, and industrial owners — can expect certainty.

We operate across 9 Indian states with a 180-strong workforce, owned HDD assets, and structured workflows built for first-time-right delivery.

OUR MANTRA

**Good Engineering +
Disciplined Project
Management.**

29

YEARS OF
EXPERIENCE

180+

STRONG WORKFORCE

700+

KILOMETRES OF HDD
EXECUTED

9

INDIAN STATES
COVERED

/ 01

Scope Adherence

Execution against approved drawings, BOQs, and specifications — with early resolution of gaps to avoid late surprises.

/ 02

Structured Processes

Realistic delivery schedules, daily progress measurement, and full visibility to stakeholders throughout the works.

/ 03

Safety & Compliance

Personnel safety and standards compliance are built into daily operations by default, not retrofitted at audit time.



— HORIZONTAL DIRECTIONAL DRILLING

Trenchless installation, executed with **owned rigs** and proven systems.

Simplex Electricals is one of India's most experienced HDD contractors, operating owned and leased rigs from **20 to 60 tonne** capacity. We execute trenchless pipeline crossings for railways, national highways, water bodies, and urban corridors — installing HDPE and steel casings for power cables, OFC, water mains, and oil & gas lines.

Active railway tracks, highways, river crossings, and dense urban corridors all demand a trenchless solution that causes **zero surface disruption** and meets strict regulatory requirements. Our teams are trained across varied soil conditions and experienced with the documentation demands of railway, highway, and utility authorities.



7+ HDD MACHINES OWNED / LEASED	700+ KMS OF HDD COMPLETED	75+ UTILITY & RAILWAY CROSSINGS	60T MAXIMUM RIG CAPACITY
--	-------------------------------------	---	------------------------------------





— END-TO-END EXECUTION

Our HDD Process — Six steps, handover-ready output.

- 01 Feasibility Assessment & Bore Path Design**
Subsurface assessment, crossing geometry, utility mapping, and bore path profiles engineered for minimum cover, radius of curvature, and pull-back force calculations.

- 02 Permit & Statutory Clearance Support**
Crossing proposals and compliance submissions for Indian Railways, NHAI, state PWD, and other authorities.

- 03 Pilot Bore Drilling**
XCMG and Goodeng rigs drill a precision pilot bore along the engineered path using steerable drill heads and trackers, with bentonite drilling fluid for bore stability and cuttings removal.

- 04 Reaming & Bore Enlargement**
Progressive enlargement through single or multiple reaming passes to 1.2–1.5× the pipe outer diameter, with back-reamers selected for soil type.

- 05 Pipeline Pullback**
HDPE pipe butt-fused or steel casing prepared to spec, then pulled back in a controlled operation. We have successfully pulled HDPE pipes up to 450 mm diameter and are equipped for larger.

- 06 Post-Drilling Works & Handover**
Power cable and telecom terminations, pressure testing, completion records, bore logs, as-built profiles, and test certificates.



SECTORS WE SERVE

- INDIAN RAILWAYS
- DISCOMS
- HIGHWAYS (NHAI)
- OIL & GAS
- TELECOM · OFC
- WATER UTILITIES
- INDUSTRIAL EPCS



— RECENT HDD PROJECTS

Three decades under **active tracks**, highways, & rivers.

HT Underground Power Cable Network

Conversion of 11 kV & 33 kV overhead power line crossings to underground cables over South Eastern Railway using HDD — Jharkhand, Odisha & West Bengal.

Railway Crossings

75+ trenchless crossings executed under active railway tracks for power, signalling, and telecom utilities.

Highway & Urban Corridor Crossings

Pipeline and cable installations across NH and state highway crossings without surface disruption.

OFC & Signalling Crossings

Telecom OFC and railway signalling cable crossings via HDPE ducting — RDSO-compliant terminations & documentation.

— OUR MACHINERY



HDD Rigs

XCMG and Goodeng rigs from 20 to 60 tonne capacity for trenchless works of all scales.



Transport & Loading Fleet

Trucks, tractors, trolleys, pickup vans, tankers for rapid mobilisation of teams, pipes, and cable drums.

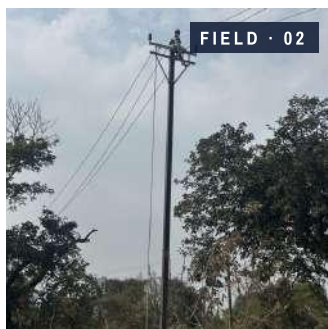


Cablings & Welding Equipment

Pipe welding tools, cable pulling winches, drum trailers, DG sets for end-to-end installation.



FIELD · 01



FIELD · 02



FIELD · 03



FIELD · 04



— ELECTRICAL DIVISION

Class 'A' Licensed · HT & LT works up to **132 kV.**

CLASS 'A' LICENCE

RDSO COMPLIANT

UP TO 132 KV

DISCOM · IR · EPC

Our electrical division executes industrial-scale electrical works for DISCOMs, Indian Railways, EPCs, and industrial owners across Eastern India. Backed by a Class 'A' Electrical Contractor licence and a 180+ strong field team, we deliver turnkey power infrastructure — from substation erection to the final consumer connection.

9,000+

KMS OF OVERHEAD
POWER LINE

1,200+

HT TERMINATIONS

20+

MAJOR
PACKAGES
EXECUTED

5,000+

KMS HT / LT LINES



/ 01 — OH & AB CABLING

Overhead Power Lines & Aerial Bunch Cabling

End-to-end execution of HT (11 kV, 33 kV) and LT overhead networks. Scope includes route survey, PCC / MS tubular / railpost pole erection, ACSR conductor stringing, Aerial Bunch (AB) cable stringing, stays, earthing, transformer mounting, protection equipment, shutdown coordination, and final commissioning.



/ 02 — UG CABLING

Underground Power Cable Laying

UG power cables installed via both trenching and trenchless HDD methods. Full scope includes excavation, cable laying, terminations, jointing, civil and structural works, and pressure testing — with HDD deployed wherever active corridors prohibit open-cut.



— TWO MORE CAPABILITIES

From **33 kV** substations to the last light pole.



/ 03 — POWER SUPPLY & DISTRIBUTION

Power Supply & Distribution Systems

Complete power supply and distribution projects — from 33 kV receiving substations, HT / LT switchgear, distribution transformers, and LT network construction through to final metering, testing, and energisation.



/ 04 — AREA & STREET LIGHTING

Area & Street Lighting

Design and installation of high-mast towers, electric poles, mini masts, and area lighting systems for industrial facilities, railway yards, highways, and large outdoor spaces. Includes supply, erection, wiring, and commissioning.

RECENT ELECTRICAL PROJECTS

- HT Aerial Bunch Cabling replacing 11 kV ACSR conductor at railway settlements — Bokaro, Jharkhand & Adra, West Bengal.
- High Mast Lighting at Kharagpur & Asansol Railway Yards.
- 750 V & 3-Phase Testing Facilities for HOG trains and LHB coaches at Jamshedpur & Rourkela.



— RECENT ELECTRICAL WORK

Three decades powering **railways** and **industry**.

HT Aerial Bunch Cabling Conversion

11 kV ACSR conductor replaced with insulated AB cable at railway settlements — Bokaro, Jharkhand & Adra, West Bengal. Reduced outages and theft incidents at sensitive corridors.

High Mast Lighting Networks

Industrial-grade high mast installations at Kharagpur & Asansol Railway Yards — supply, erection, wiring, and commissioning for round-the-clock operational visibility.

750 V & 3-Phase Testing Facilities

Test facilities for HOG trains and LHB coaches at Jamshedpur & Rourkela — design, erection, panel integration, and commissioning to RDSO standards.

33 kV Receiving Substations

Receiving substation erection & commissioning for industrial DISCOM packages — HT switchgear, distribution transformers, protection relays, and earthing systems.

— EQUIPMENT & SPECIALIST TOOLING



Pole Erection & Stringing

Hydra cranes, conductor tensioners, stringing blocks, and pulley sets for HT & LT overhead networks.



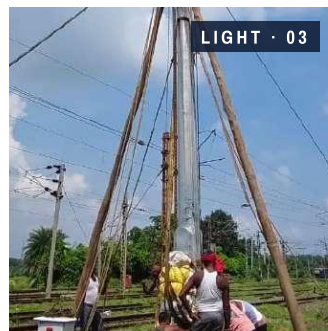
Cable Drum Trailers & Winches

Drum trailers, pulling winches, cable rollers and jointing kits for HT/LT cable laying & pulling operations.



Testing & Commissioning

Insulation testers, earth-resistance meters, protection relay kits, and torque tools for systematic handover.





— WHY PARTNER WITH SIMPLEX

Three reasons procurement leaders **choose us.**



Class 'A' Electrical License

Statutory compliance is built in. Authorised for works up to 132 kV.



Engineering + Management

Good engineering combined with structured management for quality and on-time delivery.



End-to-End Execution

Single-window solution for electrical, HDD, pipeline, and civil work.

— CERTIFICATIONS



ISO 9001:2015 Certified



Class 'A' Electrical License



RDSO-Approved Standards



Systems up to 33 kV

— SELECTED CLIENTS



— OUR OFFICES

Dhanbad

JHARKHAND · HQ

237, Shastri Nagar East,
826001

Sambalpur

ODISHA

Khata No-257/950,
Khetrajpur, 768003

Malda

WEST BENGAL

Saratpally, Malda,
732101

Jamalpur

BIHAR

ND Road, Ghositola,
811201

GET IN TOUCH

Building partnerships.
Engineering certainty.

PHONE

+91 62056 45943
+91 79784 52063
+91 90786 88335

EMAIL

vaibhav.simplex@gmail.com

WEB

www.simplexelectricals.com